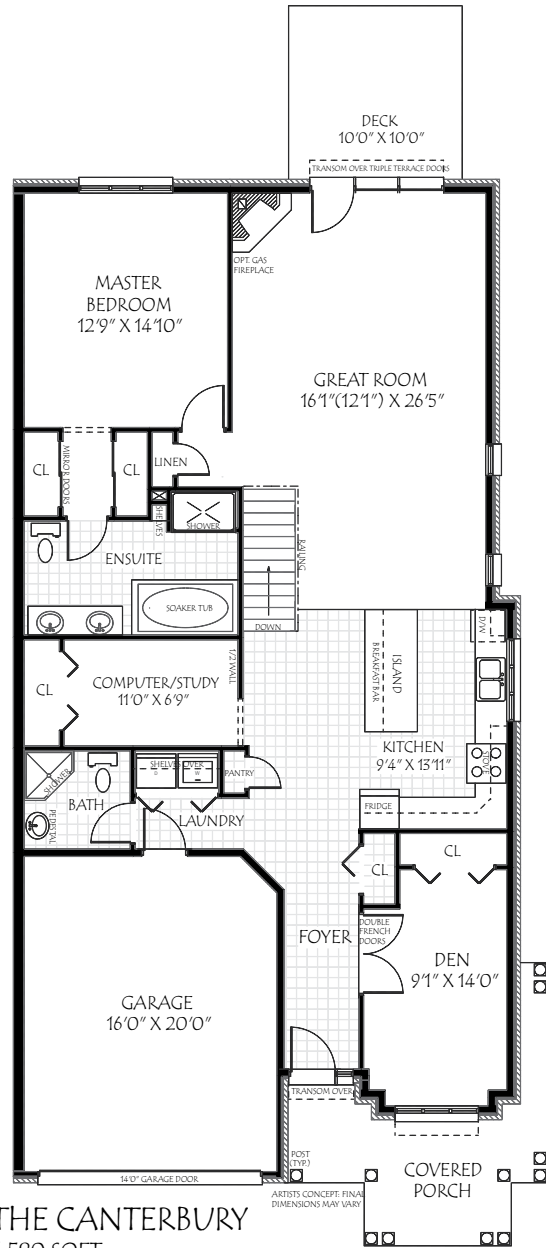
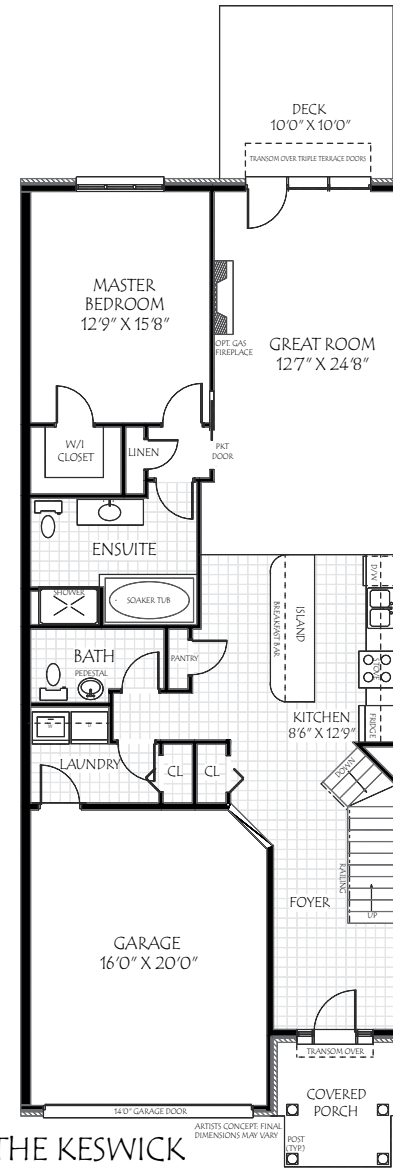


# TOWNES on St. Paul

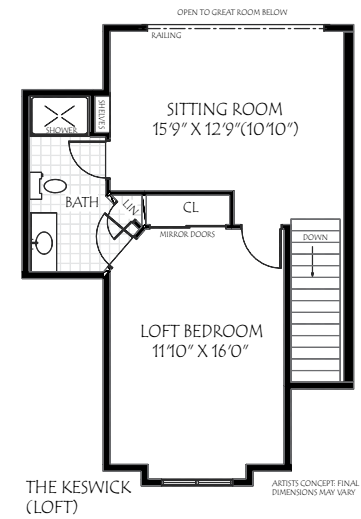
CONDOMINIUMS



**THE CANTERBURY**  
1,580 SQFT



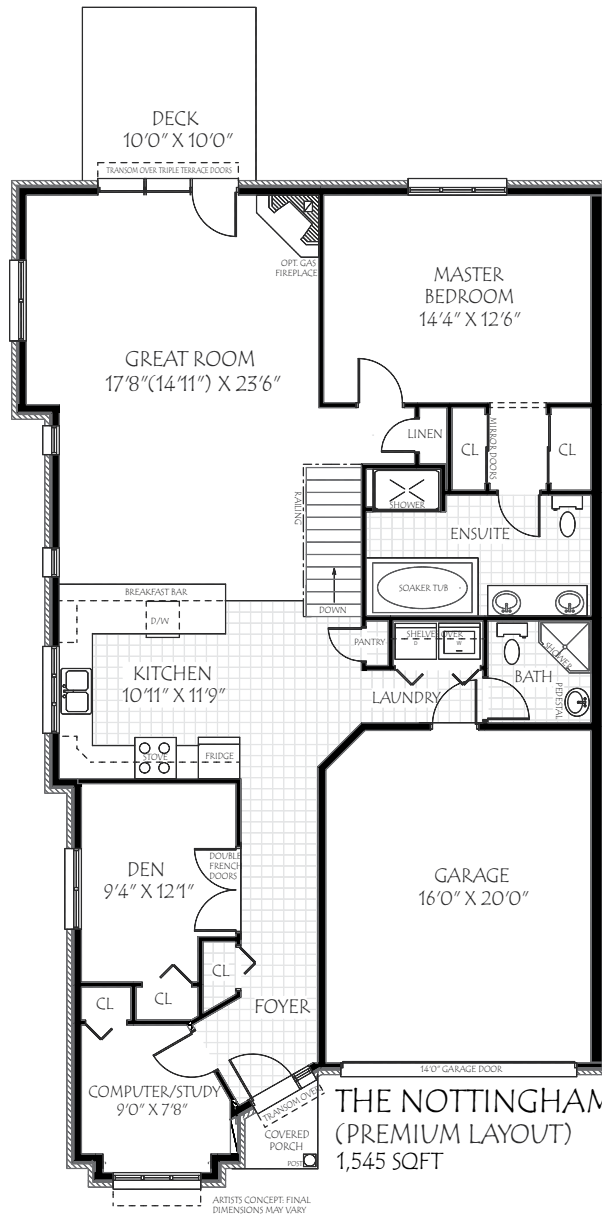
**THE KESWICK  
(MAIN FLOOR)**  
MAIN 1,266 SQFT  
LOFT 579 SQFT  
TOTAL 1,845 SQFT



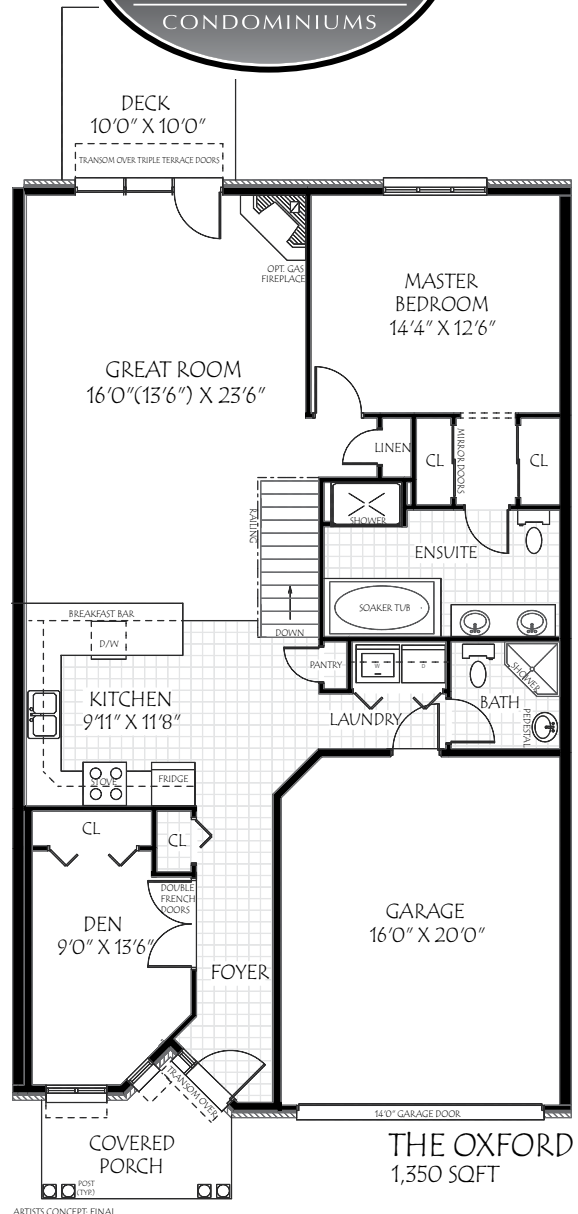
**THE KESWICK  
(LOFT)**

# TOWNES on St. Paul

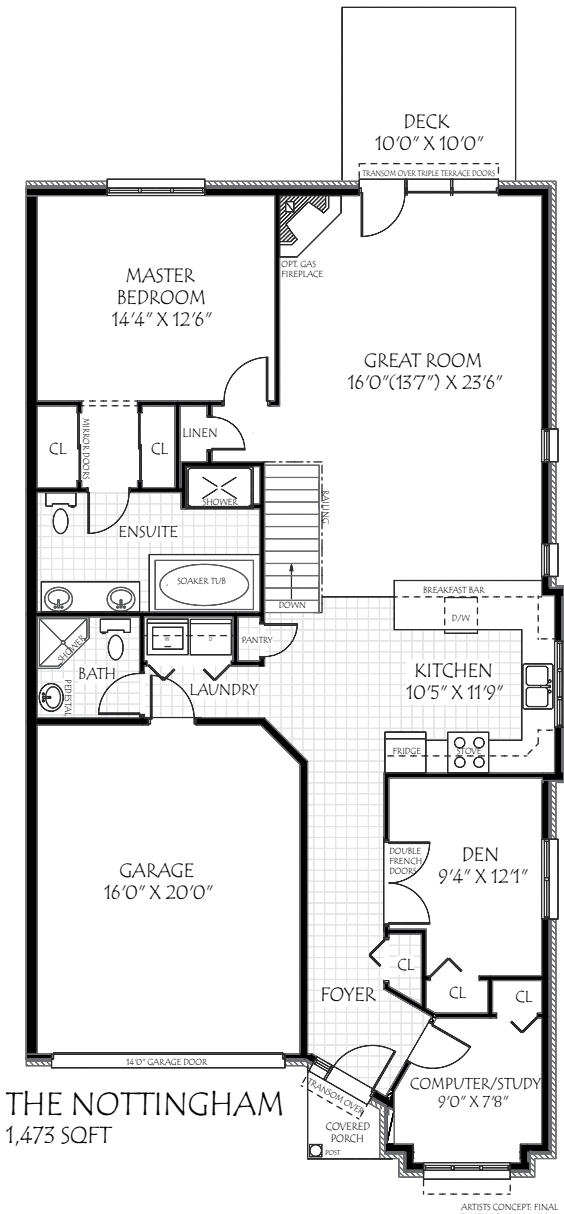
CONDOMINIUMS



**THE NOTTINGHAM**  
(PREMIUM LAYOUT)  
1,545 SQFT



**THE OXFORD**  
1,350 SQFT



**THE NOTTINGHAM**  
1,473 SQFT